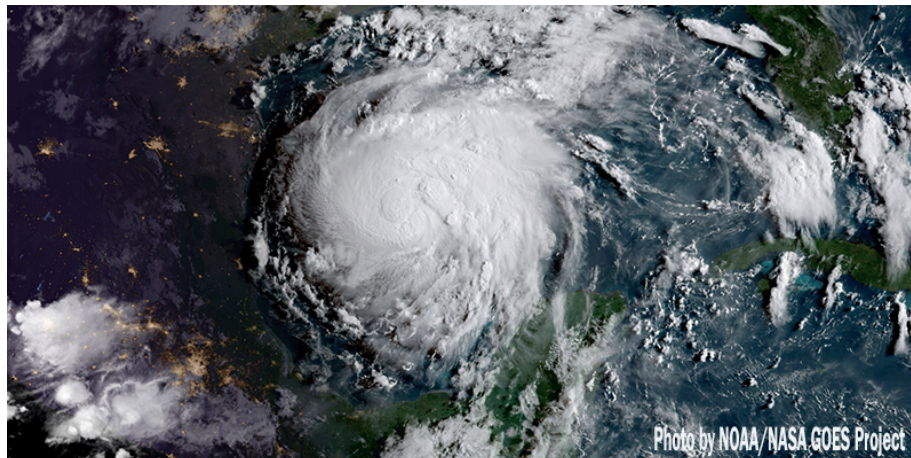


Conservation Matters is published by the Texas Water Resources Institute and the Texas A&M Natural Resources Institute.

[View this email in your browser](#)



The Next Step: TAMU experts talk about research needs following Hurricane Harvey

[Read more.](#)



Meet a scientist: Kent Portney

[Read more.](#)



Texas Land Trends report shows changes in rural working lands, operators

[Read more.](#)



TWRI requests pre-proposals for 2018-2019 graduate student research programs

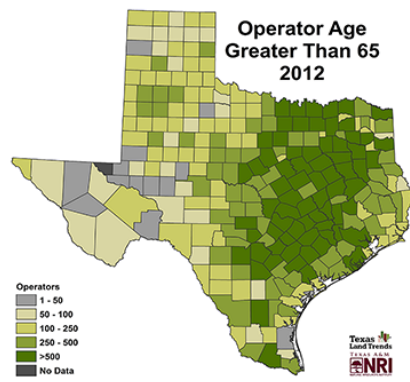
[Read more.](#)

OCTOBER 2017

MAP OF THE MONTH

Texas Land Trends

TEXAS A&M NRI
NATURAL RESOURCES INSTITUTE



October's Map of the Month: intergenerational land transfers on the horizon

[Read more.](#)



EPA accepts Navasota River watershed protection plan

[Read more.](#)



County-based wild pig abatement co-op positive alternative to bounty programs

[Read more.](#)



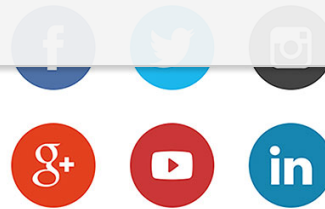
Seminar for property tax professionals set for Oct. 24 in Hunt

[Read more.](#)



Transboundary water expert speaks on water security

[Read more.](#)



Social media training set for Nov. 6-7 in Lewisville

[Read more.](#)



Rainwater harvesting, turf management training set for Oct. 12, 13 in Hill County

[Read more.](#)



September's Map of the month: a look back in Texas history

[Read more.](#)



Annual Texas A&M turfgrass field day set for Oct. 11 in College Station

[Read more.](#)



TWRI and NRI work together to foster and communicate research and educational outreach programs focused on water and natural resources science and management issues in Texas and beyond. TWRI and NRI are part of Texas A&M AgriLife Research, the [Texas A&M AgriLife Extension Service](#) and the [College of Agriculture and Life Sciences at Texas A&M University](#).

Conservation Matters publishes timely information about water and natural resources news and research at universities and organizations in Texas. If you have information for possible inclusion in *Conservation Matters*, please contact Kathy Wythe at kwythe@tamu.edu. All submissions may be edited for grammar and style.

Subscribe

Past Issues

Translate ▼

RSS 

[unsubscribe from this list](#) [update subscription preferences](#)