

Conservation Matters is published by the [Texas Water Resources Institute](#) and the [Texas A&M Natural Resources Institute](#).

[View this email in your browser](#)



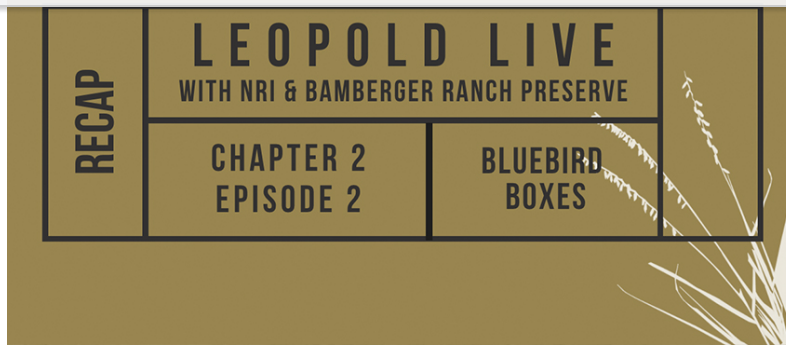
### Helping Texas' unique snakes through research

NRI as a unit of Texas A&M AgriLife, has been doing a lot of work researching three unique snakes: the Louisiana pinesnake, the eastern indigo and the massasauga rattlesnake. [Read more.](#)



### Urban Riparian demonstration site in Seguin approved for three more years

The Urban Riparian and Stream Restoration Program has been approved to continue its research at a demonstration site along Geronimo Creek for another three years. The team's goal is to reduce sedimentation rates and erosion along the stream banks. [Read more.](#)



### Leopold Live! Chapter 2: Bluebird boxes recap

Lights, camera, Leopold Live! Last month we premiered our second episode of Leopold Live! Chapter 2 with our partners at Selah, Bamberger Ranch Preserve, and we truly enjoyed connecting with you again as we continue with the series. [Read more.](#)



### Water's taste reflects its journey to the tap

Depending on where you turn on the tap, water can taste different. That doesn't necessarily mean there is anything to be concerned about. [Read more.](#)

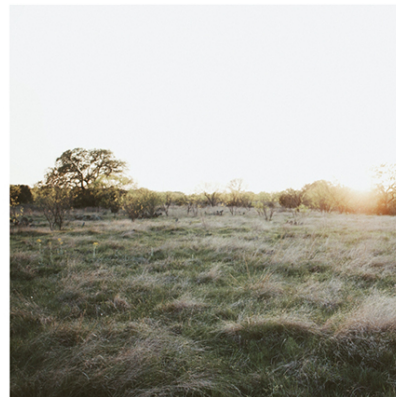
PRIVATE LAND STEWARDSHIP  
ACADEMIES

---

## VEGETATION & LANDSCAPE

---

A COLLECTION



### Private Land Stewardship Academies: Vegetation and Landscapes

We're building a community of practice around land stewardship where you can click, open, explore, shuffle and share the content to save and use as you need it. We're excited to share the third of four collections with you—on deck: Vegetation and Landscapes. [Read more.](#)



#### Meet a scientist: Kathleen O'Reilly

Kathleen O'Reilly, Ph.D., is a professor in the Geography Department at Texas A&M University where she focuses on how people's location and gender affect their relationship with water and sanitation. But her road to these unique focuses was a long and unusual journey. [Read more.](#)



#### Fares of Prairie View A&M to receive Soil Science Society of America's top award

[Read more.](#)



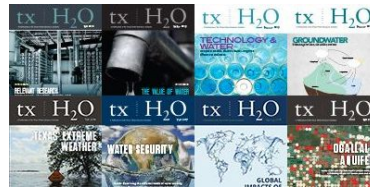
#### What's the rub: Why wild pigs rub on trees, poles and posts

[Read more.](#)



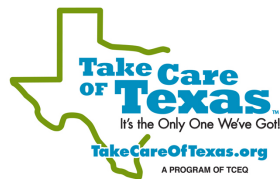
#### Texas Water Journal publishes new article in Volume 12

[Read more.](#)



#### txH<sub>2</sub>O highlight: Off and running

[Read more.](#)



#### Take care of Texas

[Read more.](#)



#### ICYMI: Upcoming riparian and stream ecosystem trainings in September

[Read more.](#)

## Events

***Previously listed events may be canceled or postponed to comply with Texas A&M University and the Centers for Disease Control and Prevention (CDC) directives designed to protect public health.***





[Small Acreage - Big Opportunity Workshop](#),  
August 28, 2021, Alpine



[Rainwater harvesting, turf management hybrid training](#),  
August 31, 2021, Copperas Cove



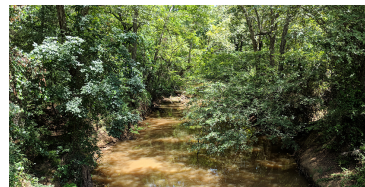
[Petronila & San Fernando Creek WPP General Stakeholder Meeting](#),  
September 1, 2021, Bishop



[Riparian & Stream Ecosystem Training - Leon Creek Watershed](#),  
September 7, 2021, Gatesville



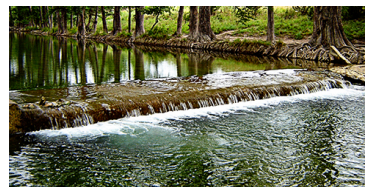
[The Digital Now for Natural Resource Professionals: Online in the 21st Century](#),  
September 8-9, 2021, Dallas



[Riparian & Stream Ecosystem Training - Angelina River Watershed](#),  
September 22, 2021, Tyler



[Rainwater harvesting, turf management hybrid training](#),  
September 23, 2021, Seguin



[Texas Watershed Planning Short Course](#),  
September 27-30, 2021, Bandera

### University land, water & wildlife news we are reading

- [Now At Texas A&M, Southern Regional Climate Center continues key services](#), Texas A&M Today
  - [MRIs on crop roots open new doors for agriculture](#), Texas A&M Today
  - [Childhood lead exposure may adversely affect adult personalities](#), UT News
  - [Optimizing phase change materials could reduce power plant water consumption](#), Texas A&M Today
  - [Economic impacts of flooding](#), UT Arlington
  - [Fires, drought slamming much of Western U.S.](#), Texas A&M Today
  - [Why middle-class residents want to stay put after floodwaters recede](#), Rice University
  - [How ocean engineers are improving material safety in coastal structures](#), Texas A&M Today
  - [SMU professor awarded NSF grant for models to better aid evacuees after natural disasters like Hurricane Harvey, Katrina](#), Southern Methodist University
- 
- [Colonias bear the heaviest burden when rain falls in the Rio Grande Valley](#), Texas Standard

• [We're starting to be concerned about the health impacts on people: A Q&A on regional climate change](#), El Paso Matters

- [NASA's new mission studies how intense thunderstorms may influence climate change](#), ABC News
- [Facing severe droughts, developers seek to reuse the water they have](#), New York Times
- [February's deadly freeze gives rise to zombie trees across Texas](#), Houston Chronicle

### Resources

- [Texas Water Journal](#)
- [Texas+Water](#)
- [Wild Wonderings](#)
- [txH<sub>2</sub>O](#)
- [Texas Land Trends](#)
- [Natural Resources Training Program Updates](#)
- [Texas A&M AgriLife Extension Service](#)
- [Texas A&M AgriLife Research](#)



TWRI and NRI work together to foster and communicate research and educational outreach programs focused on water and natural resources science and management issues in Texas and beyond. TWRI and NRI are part of [Texas A&M AgriLife Research](#), the [Texas A&M AgriLife Extension Service](#) and the [College of Agriculture and Life Sciences](#) at Texas A&M University.

Conservation Matters publishes timely information about water and natural resources news and research at universities and organizations in Texas. If you have information for possible inclusion in Conservation Matters, please contact Kerry Halladay at [kerry.halladay@ag.tamu.edu](mailto:kerry.halladay@ag.tamu.edu). All submissions may be edited for grammar and style.

Copyright © 2020 Texas Water Resources Institute and Texas A&M Natural Resources Institute, All rights reserved.

Our mailing address is:  
2260 TAMU | College Station, TX 77843-2260

[unsubscribe from this list](#) [update subscription preferences](#)

[Subscribe](#)

[Past Issues](#)

[Translate ▼](#)

[RSS](#)

